



SPITFIRE
DOORS

THE ART OF PERFECTION

WELCOME TO SPITFIRE DOORS,
THE WORLD'S MOST EXCLUSIVE
COLLECTION OF LUXURY
RESIDENTIAL ENTRANCE DOORS.

PIVOTS. DOORS WITH ATTITUDE

Pivot doors are wider and taller by design. Their sheer scale allows you to be creative when designing an awesome entrance to your property.

The inherent strength of our pivot door frame combined with our clever pivot mechanism means that a Spitfire pivot door is capable of carrying heavy external finishes like ceramic, laminated glass or wood, with ease.

Our hi-security pivot doors which have been independently tested, can be installed either externally or internally, often used to protect 'safe rooms'.

Pivot Doors are definitely 'on trend' and always create a stunning first impression.



THE ART OF PERFECTION

"The details are not the design,
they make the design."
- Charles Eames



7600



7650



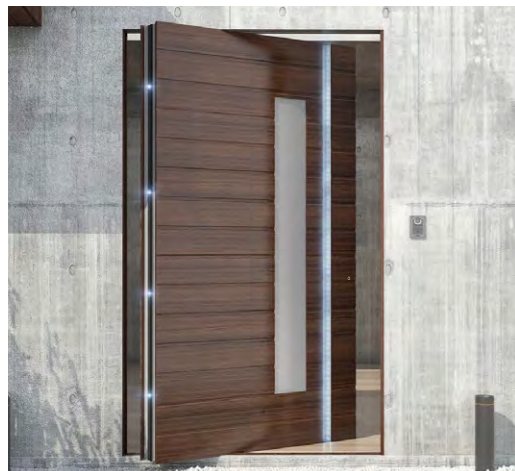
7104



7190



7104



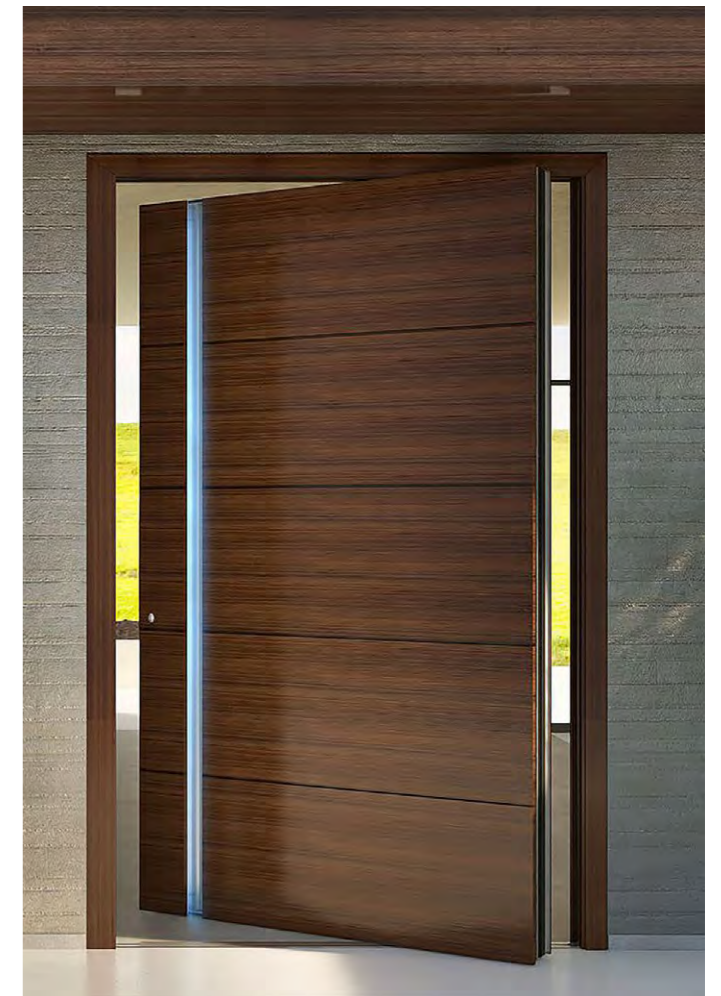
7515



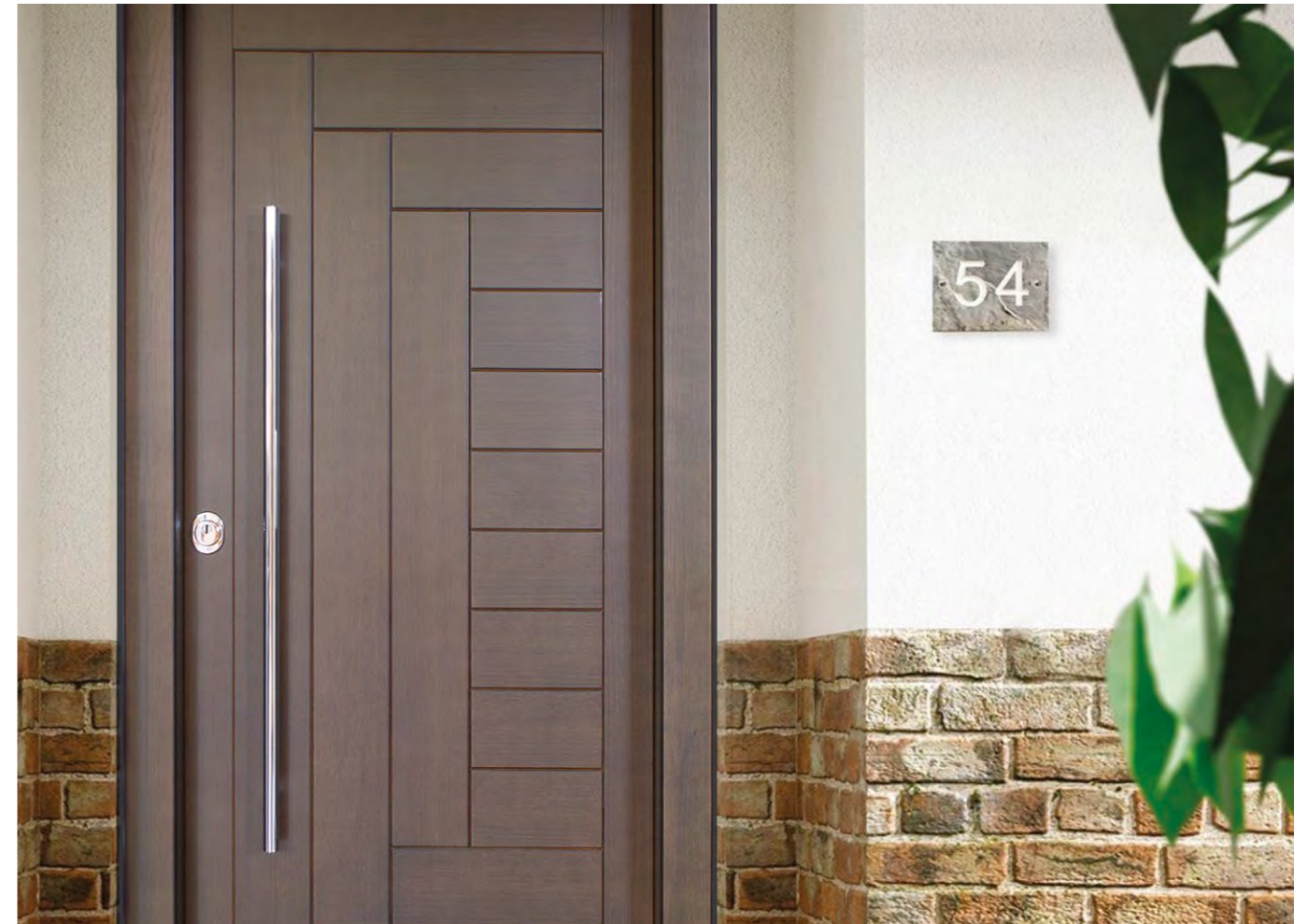
7004

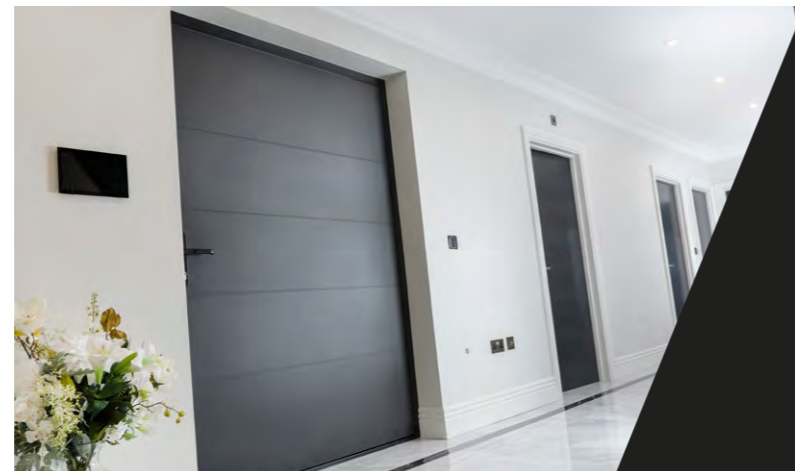
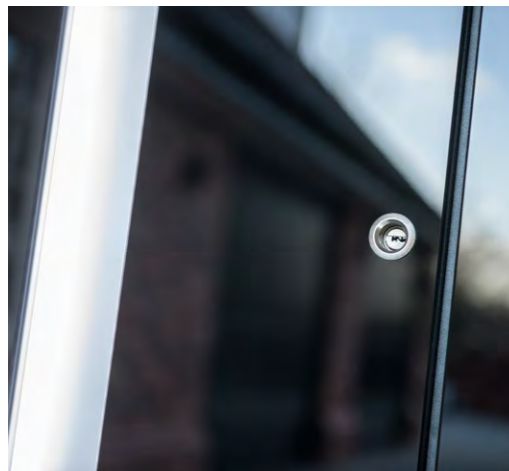
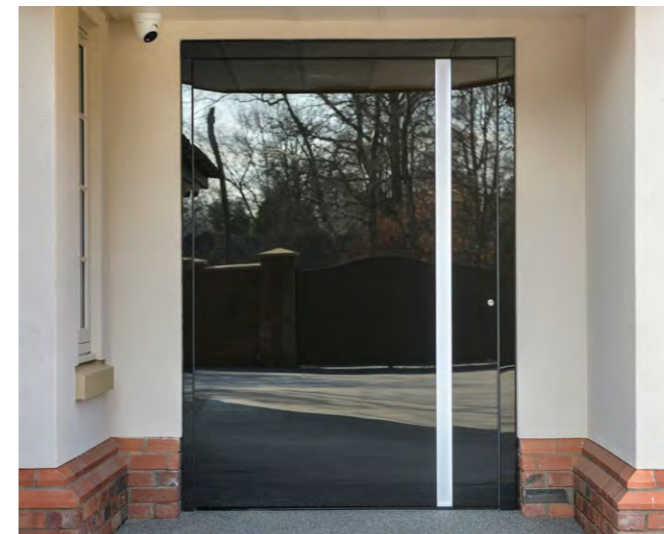


7004



7104







DESIGN OPTIONS

We can make pivot doors from a minimum of 1100mm (1200mm in new build) to a maximum of 2000mm wide, and a maximum of 3000mm high. By special arrangement, we can manufacture Pivot doors up to 4000mm high.

Our pivot threshold is virtually flush at floor level, so it is very important to consider your internal floor finishing material (marble, tile, carpet) before ordering your door. A hidden weatherbar drops down inside the door as it is closing but it is always best to have a non-permeable internal floor material behind a pivot.

Spitfire pivot's can be dressed in exciting finishes, including ceramic, stainless steel, carbon-fibre effect, stone, aluminium, rare natural wood, eco-lacquered wood, corten, liquid metal, laminated glass, ABS thermoplastics or waterproof MDF.

Double pivot doors are available, as are door and a half configurations, or doors with matching side frames or glazed side elements. We also offer hi-security pivot doors, fitted with a heavy-duty steel outerframe, independently tested to ENV1627 at levels 2, 3 and 4. Externally, it will not be obvious that it is a hi-security pivot door but when the door is open, a substantial locking system will be obvious.

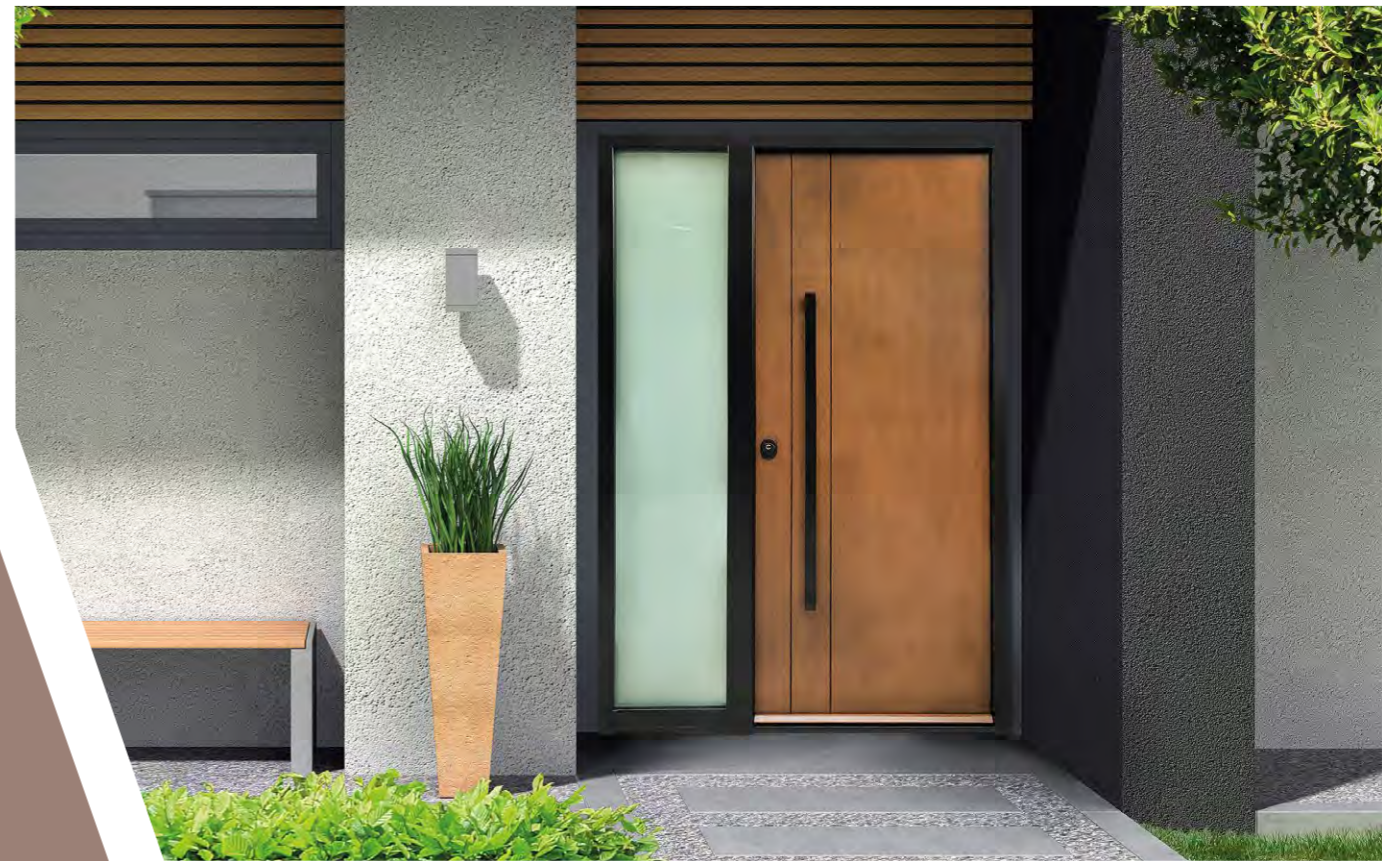
Spitfire pivots can be installed within a Spitfire aluminium curtain wall assembly or into brick, stone or steel.

The thermal performance of our pivot doors will vary slightly by finishing material, but they are always below 1.0 W/m²k, which is way below current Building Regulation requirements.

"Beauty is the harmony
of function and form."

- Alvar Aalto







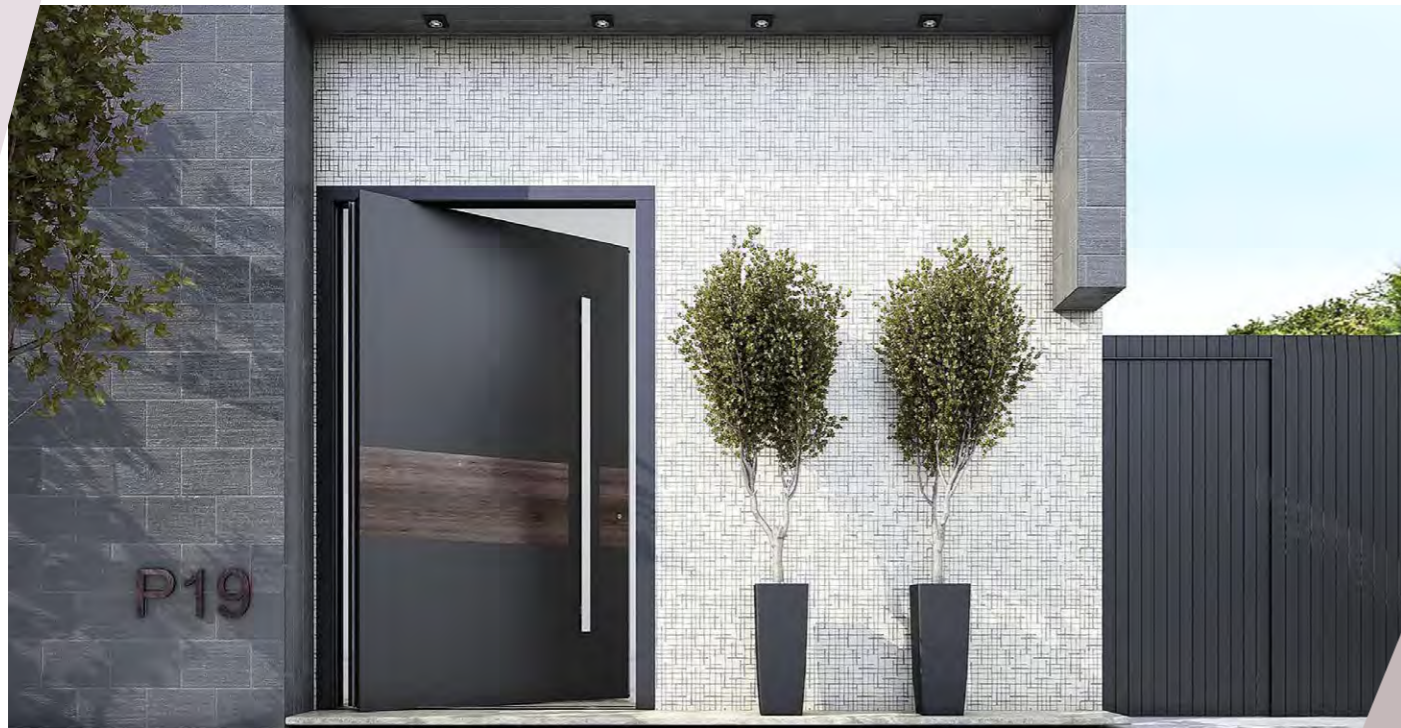
7592



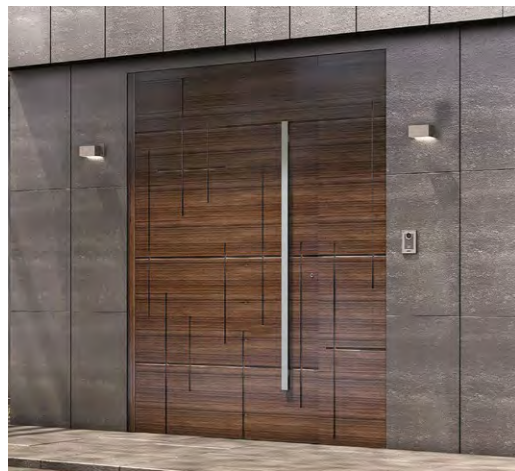
7592



7006



7250



7192



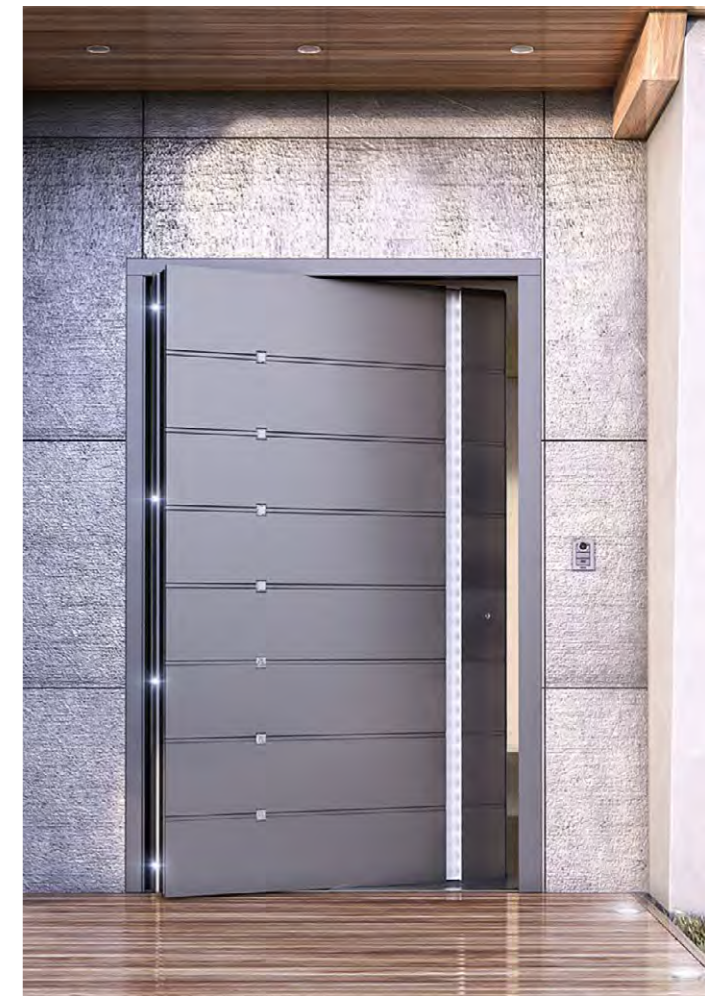
7192



7577



7156



7177



7116



7190

UNIQUE FEATURES

DOOR FRAME

- Our 3mm thick aluminium door frame is 113mm deep (front to back)

DOOR ACCESSORIES

Luxury stainless steel pullbar handles are usually selected externally and lever handles internally. On some pivot models we offer a special recessed external handle, with built-in LED's.

On some models we offer the option of fitting a vertical line of small LED's down the back of the door sash, only visible when the door is open.

Fingerprint readers are a highly desirable upgrade and you should always order a soft-close door closer, which we fit unobtrusively in the head of the sash.

And of course, we allow you to add Swarovski® crystals to most Spitfire pivot doors.

PERFORMANCE

Each Pivot door is slightly different depending on the material you choose, but in general our doors achieve:

- Class 3 Air Tightness
- Class 1A Water Tightness
- C5 Wind Load Resistance
- Soundproof to 34 decibels

"Sometimes, less is more."
- William Shakespeare

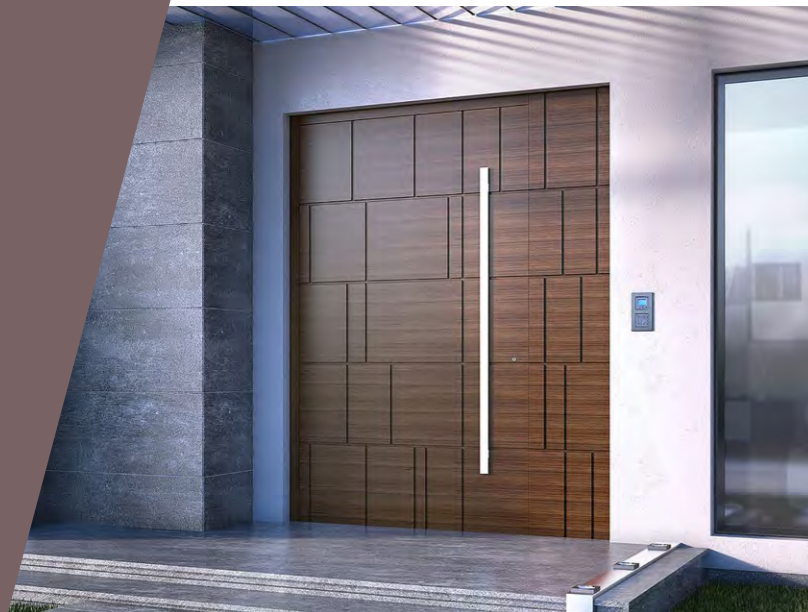




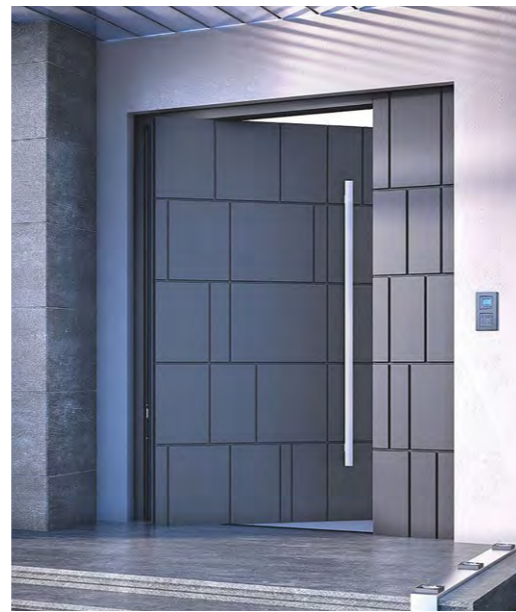
7115



7251



7191



7191



7550



7200



7155



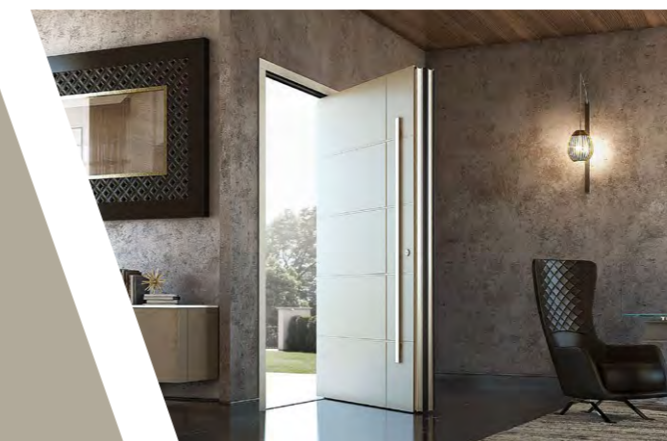
7503



7106

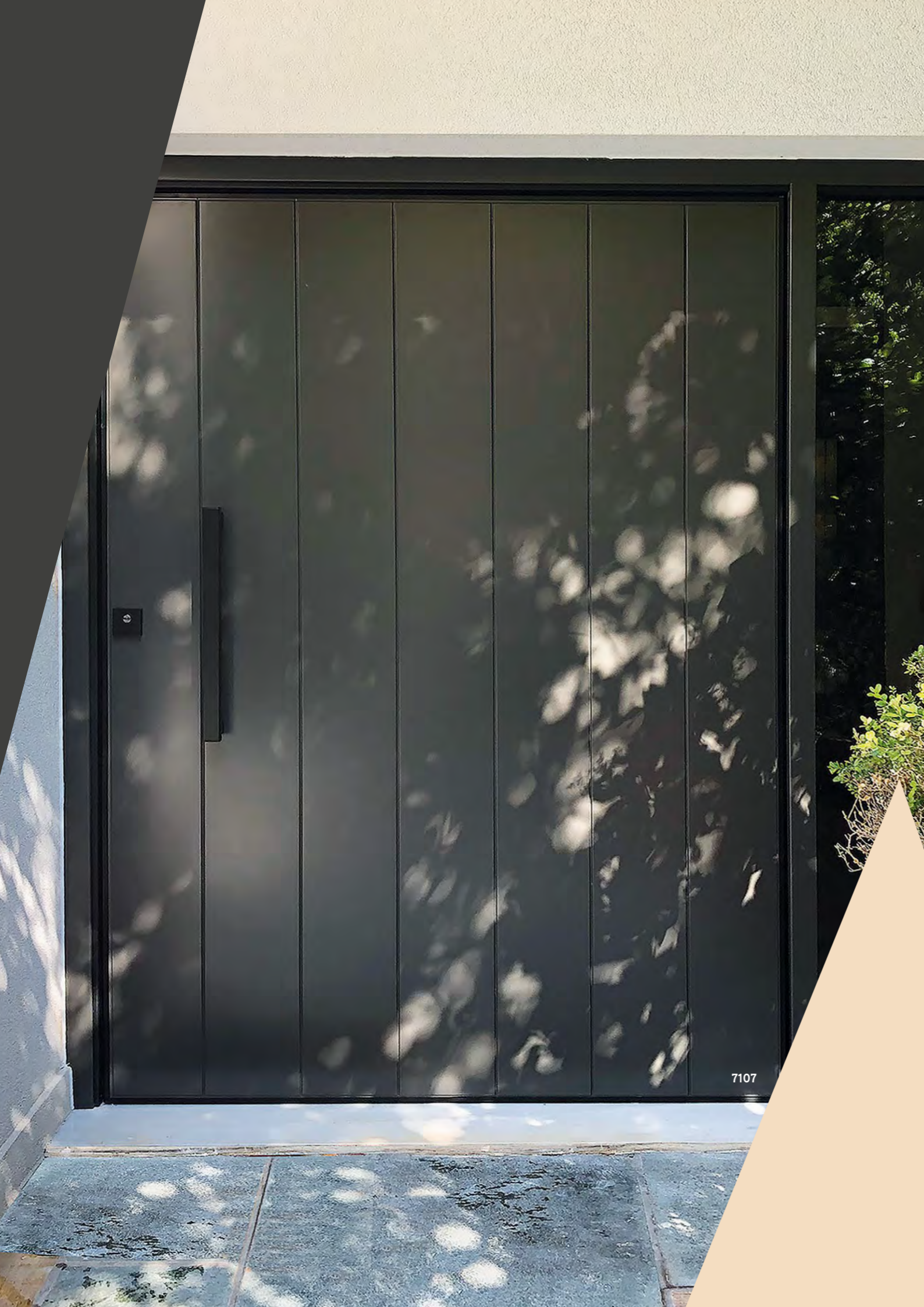


7000



7155

Most of the door designs in this brochure are also available as hinged doors, subject to size limitations.



HOW PIVOT DOORS OPERATE

The pivot is a very simple mechanism which will give many years of trouble-free use because there is so little that can fail. At the top and bottom on the hinge side, is an elongated pin that is embedded in the sash and that pin slots into the outerframe.

The pivot point is between 120mm and 400mm in from the edge of the door sash, depending on the overall size of the door itself. Surprisingly for such huge doors they are very light to operate, a child can easily open and close them. We always recommend a concealed door closer to effectively 'soft close' the door.

A weatherbar will drop down under the door as the door closes, to form a seal with the threshold. Due to the almost completely flush detailing at the threshold, when installing a pivot in exposed locations we recommend that a non-permeable floor covering is used inside the door, to cope with potential drops of water ingressing.

REFURBISHMENT

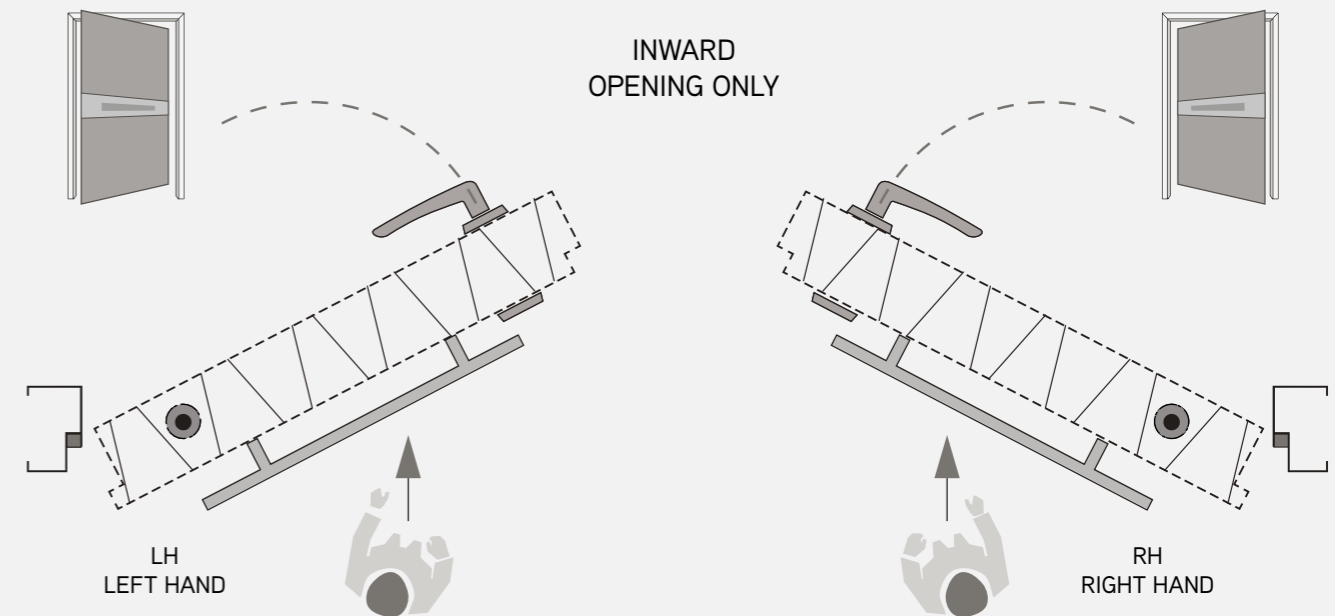
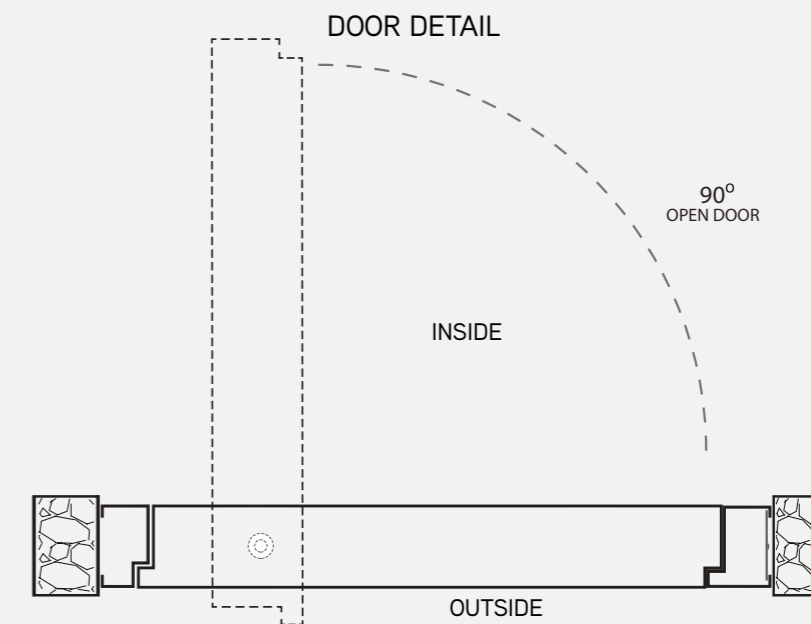
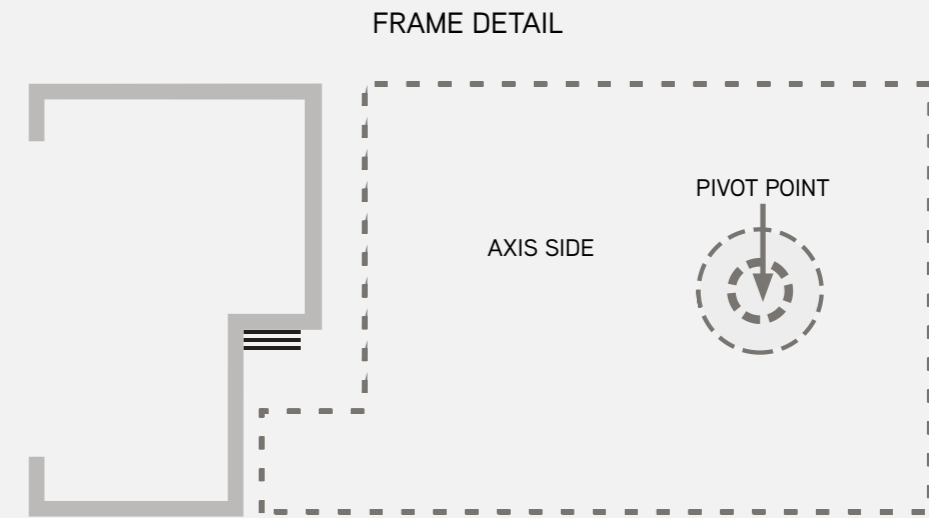
	WIDTH	HEIGHT
MIN.	1100mm	2000mm
MAX.	2000mm	3000mm

*4000mm high doors by special order

NEW BUILD

	WIDTH	HEIGHT
MIN.	1200mm	2000mm
MAX.	2000mm	3000mm

*4000mm high doors by special order





7104



7015



7100



7200



7100



SPITFIRE
DOORS

March 2021